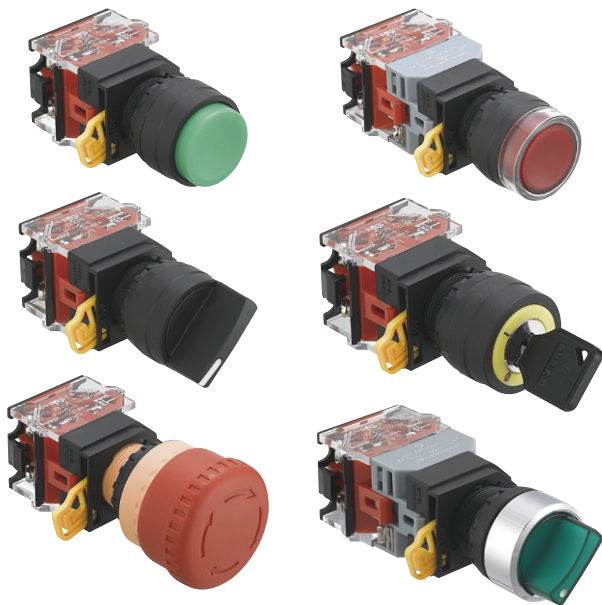


# DT Series Push Button



## Parameter

<b>Mechanical life</b>	momentary push button $\geq 2 \times 10^6$
	maintained push button, selector switch $\geq 10^6$
	key-lock selector switch, emergency $\geq 5 \times 10^5$
<b>Electrical life</b>	$\geq 2 \times 10^5$
<b>Voltage</b>	AC/DC
	6V/12V/24V/36V/48V/110V/220V/380V
	AC
	220V/380V

## Features

- Installation Aperture :  $\phi 8$ ,  $\phi 12$ ,  $\phi 16$ ,  $\phi 22$ ,  $\phi 30$ .
- Self-resetting lever design, quick installation.
- Independent module, convincing service.
- High-quality flame retardant material, good insulation and reliable contact.
- High-quality silver alloy, reliable on-off and long electrical life.
- Various colors: red, green, blue, yellow, white, black.

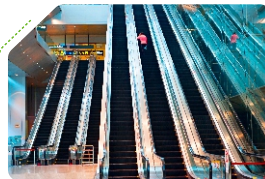
## Application



Wind



Ship building

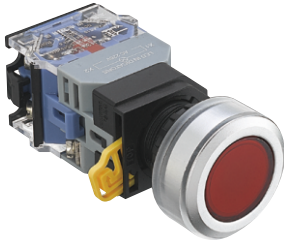


Elevator



Rail way

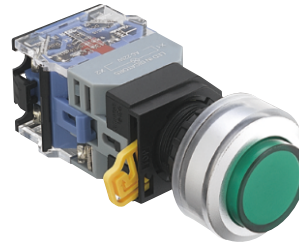
□ Momentary & Maintained Flat



Type

- DT-FR-RD-11
- DT-FR-BU-11
- DT-FR-GN-11
- DT-FR-YE-11
- DT-FR-WH-11
- DT-FR-BL-11
- DT-FL-RD-11
- DT-FL-BU-11
- DT-FL-GN-11
- DT-FL-YE-11
- DT-FL-WH-11
- DT-FL-BL-11

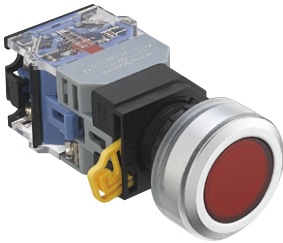
□ Momentary & Maintained Flat High



Type

- DT-FRH-RD-11
- DT-FRH-BU-11
- DT-FRH-GN-11
- DT-FRH-YE-11
- DT-FRH-WH-11
- DT-FRH-BL-11
- DT-FLH-RD-11
- DT-FLH-BU-11
- DT-FLH-GN-11
- DT-FLH-YE-11
- DT-FLH-WH-11
- DT-FLH-BL-11

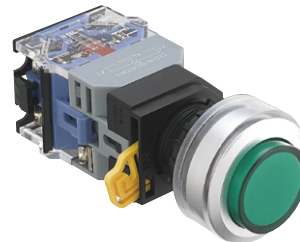
□ Momentary & Maintained Flat With Lamp



Type

- DT-FRD-RD-11
- DT-FRD-BU-11
- DT-FRD-GN-11
- DT-FRD-YE-11
- DT-FRD-WH-11

□ Momentary & Maintained Flat High With Lamp



Type

- DT-FLD-RD-11
- DT-FLD-BU-11
- DT-FLD-GN-11
- DT-FLD-YE-11
- DT-FLD-WH-11

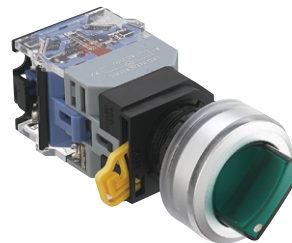
□ Selector Switch



Type

- DT-S2R-RD-11
- DT-S2R-BU-11
- DT-S2R-GN-11
- DT-S2R-YE-11
- DT-S2R-WH-11
- DT-S2R-BL-11
- DT-S2L-RD-11
- DT-S2L-BU-11
- DT-S2L-GN-11
- DT-S2L-YE-11
- DT-S2L-WH-11
- DT-S2L-BL-11

□ Selector Switch With Lamp



Type

- DT-S2RD-RD-11
- DT-S2RD-BU-11
- DT-S2RD-GN-11
- DT-S2RD-YE-11
- DT-S2RD-WH-11
- DT-S2LD-RD-11
- DT-S2LD-BU-11
- DT-S2LD-GN-11
- DT-S2LD-YE-11
- DT-S2LD-WH-11

□ Key-lock selector switch



Type

- DT-K2R-RD-11
- DT-K2R-BU-11
- DT-K2R-GN-11
- DT-K2R-YE-11
- DT-K2R-WH-11
- DT-K2R-BL-11
- DT-K2L-RD-11
- DT-K2L-BU-11
- DT-K2L-GN-11
- DT-K2L-YE-11
- DT-K2L-WH-11
- DT-K2L-BL-11

□ Pilot&buzzer

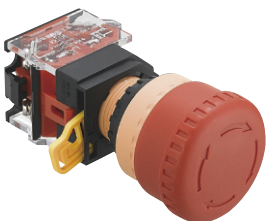


Type

- DT-PL-RD
- DT-PL-BU
- DT-PL-GN
- DT-PL-YE
- DT-PL-WH
- DT-BZ-RD
- DT-BZ-GN
- DT-BZ-YE
- DT-BZ-BL

For more models,  
PLS call Tel: +86-574-63510770

□ Emergency Push Button



Type

- DT-EP-RD-11



OFFICIAL WEBSITE LINKEDIN YOUTUBE FACEBOOK